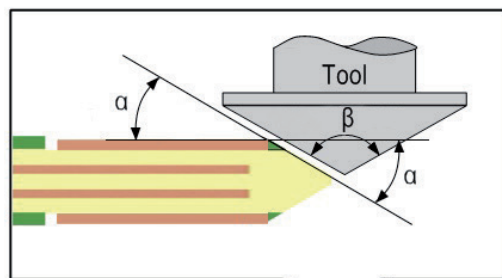


Design Rules

Gold connectors

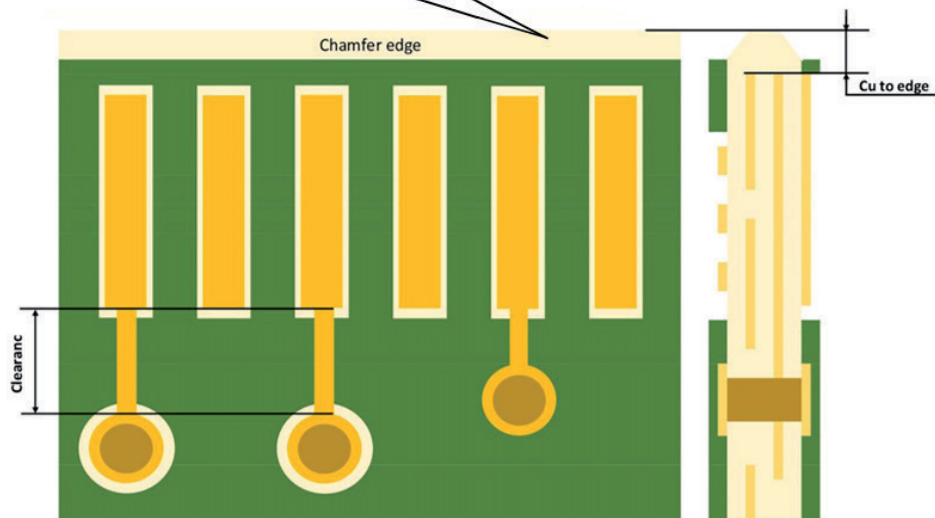
Chamfering - Minimum clearance (values for board 1.5 mm thick) depends on chamfering angle

gradient	α	β	Cu to edge (PCB 1,5 mm)
standard	45°	90°	700 μm
	30°	120°	1100 μm
	20°	140°	1600 μm



Maximum board size

single and double sided	multilayer
265 x 370 mm	265 x 363 mm



Gold fingers

	minimum
clearence to uncover pad	2000 μm